



# Oklahoma Rural Water Association

Jeannie Anthony

Source Water Protection Specialist

# ORWA Programs

- Source Water Protection
  - Assist communities, served by public water systems, in reducing or eliminating potential risks to drinking water supplies
  - Develop Source Water Protection Plans
  - Provide assistance to entities for the implementation of contamination prevention measures
  - Contingency planning



# Source Water Protection

- Surface water
  - Rivers, lakes, streams
- Groundwater
  - Aquifers
- Both work in conjunction with one another!
- Both are affected greatly throughout the state!
  - Quality
  - Quantity





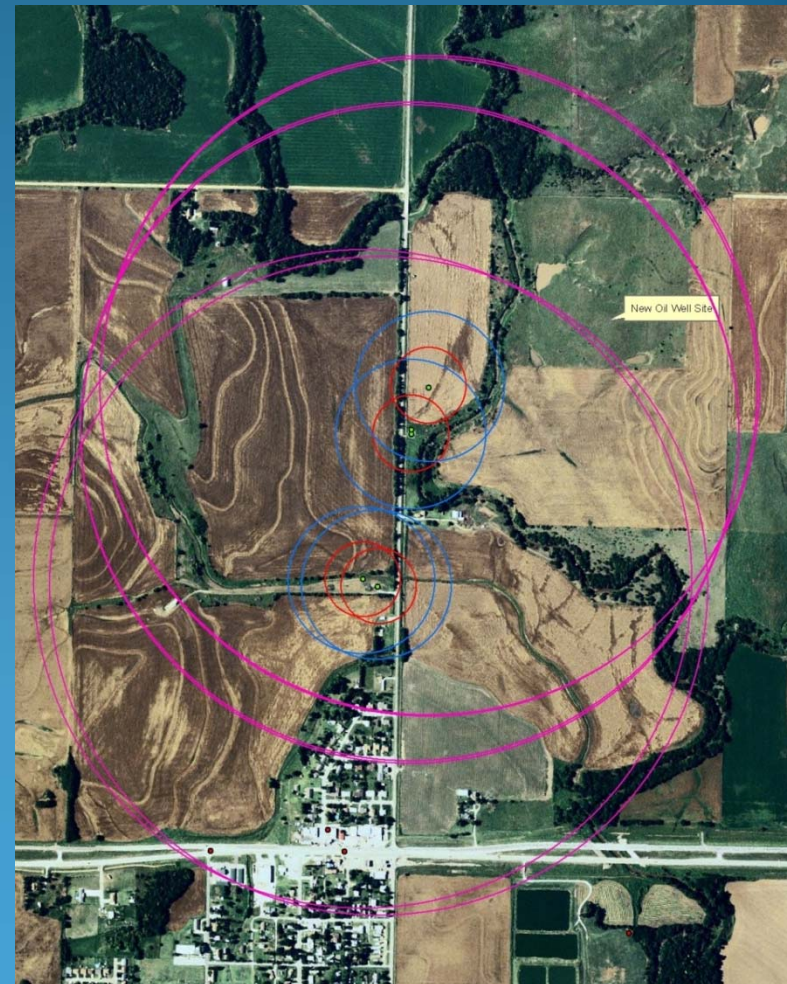




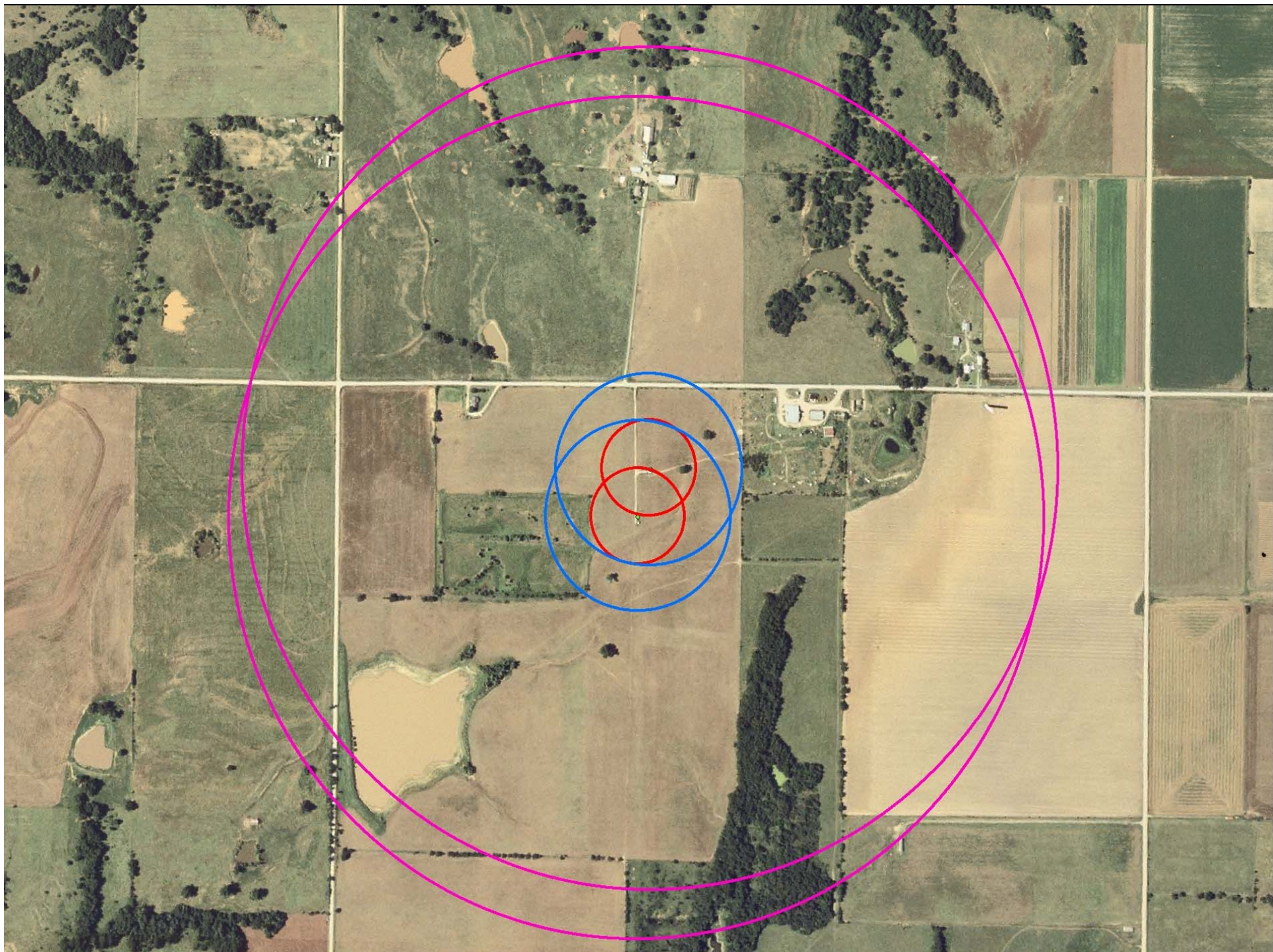


# ORWA, What We Do . . .

- On-site field assessment of watershed and Potential Sources of Contamination (PSOCs)
- Delineation Areas
  - 300 ft
  - 600 ft
  - ½ mile radius
  - Entire watershed for Surface Water



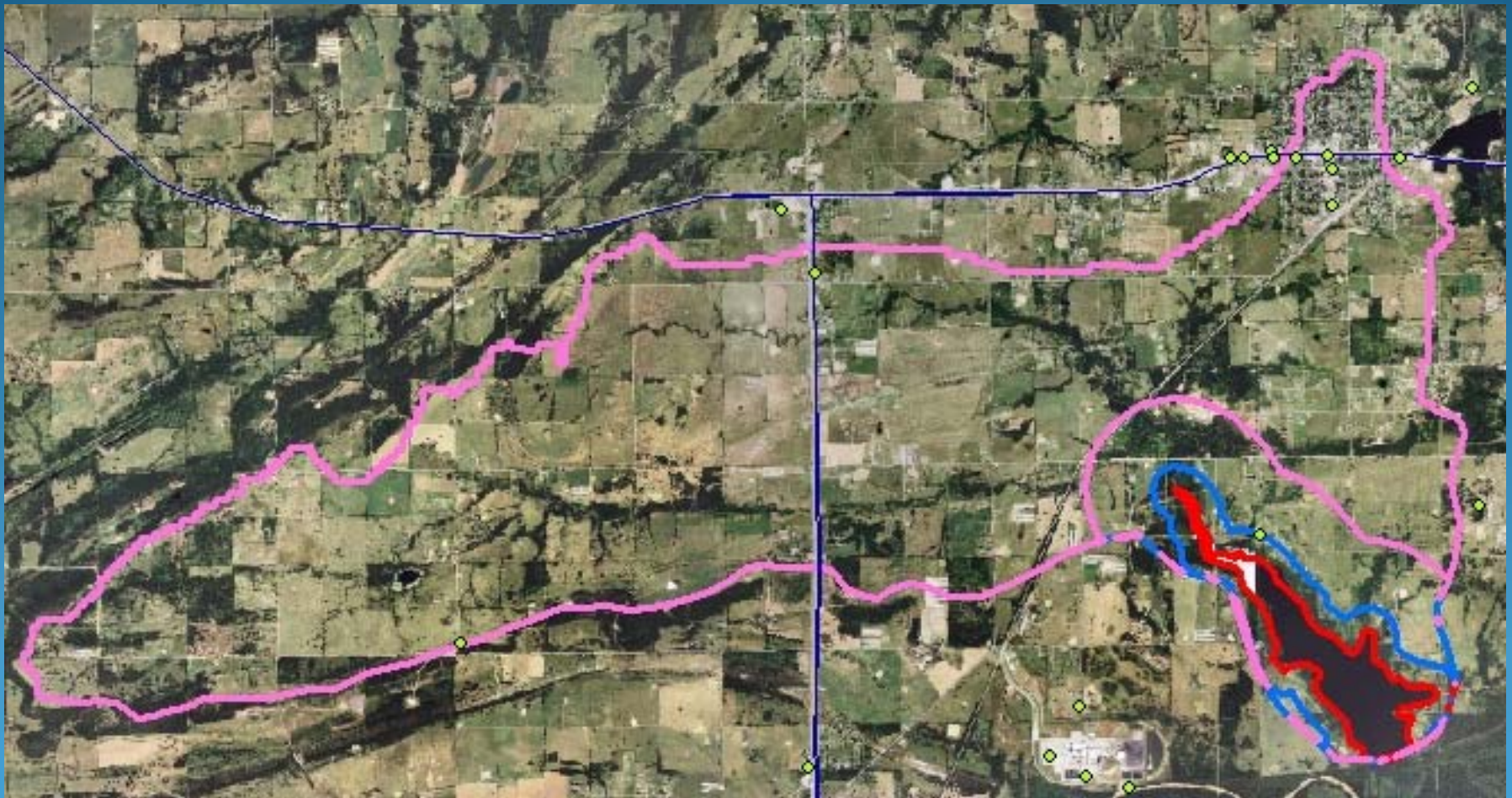






# ORWA, What we do. . .

- GPS all findings
- Provide map of findings





# ORWA, What We Do . . .

- On-site field assessment of water wells and PSOC
  - Oil & Gas Exploration
  - Agricultural Practices
  - Chemical storage/  
application
  - AST's / UST's
  - Pesticide application
  - Septic systems, Private  
water wells











# ORWA, What We Do . . .

- Coordination between agency and water system to implement Source Water Protection measures
  - Regulatory
  - Voluntary
  - Funding
- Public Education
  - Public School System (Water Day, etc.)
  - Outreach materials to community





# Public Water Supply Concerns

- Watershed run-off includes: Nutrients, Chemicals, and Sediments
- Increased treatment costs
- Difficulty meeting drinking water standards/regulatory requirements
  - DBPR Stage I & II
  - TOCs
  - Turbidity
- Decreased holding capacity of waterbodies



# Public Water Supply Concerns

- Subdivisions built prior to looking for good water sources.
- Private wells being drilled
  - Energy Sector
  - Agriculture
  - Individual homes, etc.
- PWS well being drawn down due to proximity of new wells and/or over pumping of new wells





# Public Water Supply Concerns

- Existing water wells going dry
- Funds for replacement of water source or new treatment facilities
  - Small tax base/income
  - Let's get it right the 1<sup>st</sup> time!
  - Protection of our water sources = a more **SUSTAINABLE WATER FUTURE** for us all!



Oklahoma Rural Water Association

1410 SE 15<sup>th</sup>

Oklahoma City, OK 73143-5349

[www.okruralwater.org](http://www.okruralwater.org)

800-375-6792

Jeannie Anthony

[janthony@okruralwater.org](mailto:janthony@okruralwater.org)

405-640-9599







# Secondary containment?????

